

Medicaid Reform in Florida: Research Questions

Allyson Hall, PhD

Department of Health Services Research,
Management, and Policy

Florida Center for Medicaid and the Uninsured
University of Florida

AcademyHealth Annual Research Meeting

June 25, 2006



Florida Center for Medicaid and the Uninsured
UNIVERSITY OF FLORIDA
Shaping Healthcare Policy

UNIVERSITY OF FLORIDA

College of
PublicHealth and
HealthProfessions



Principles of Medicaid Reform in Florida

- Patient responsibility and empowerment
- Marketplace decisions
- Bridging public and private coverage
- Sustainable growth rate

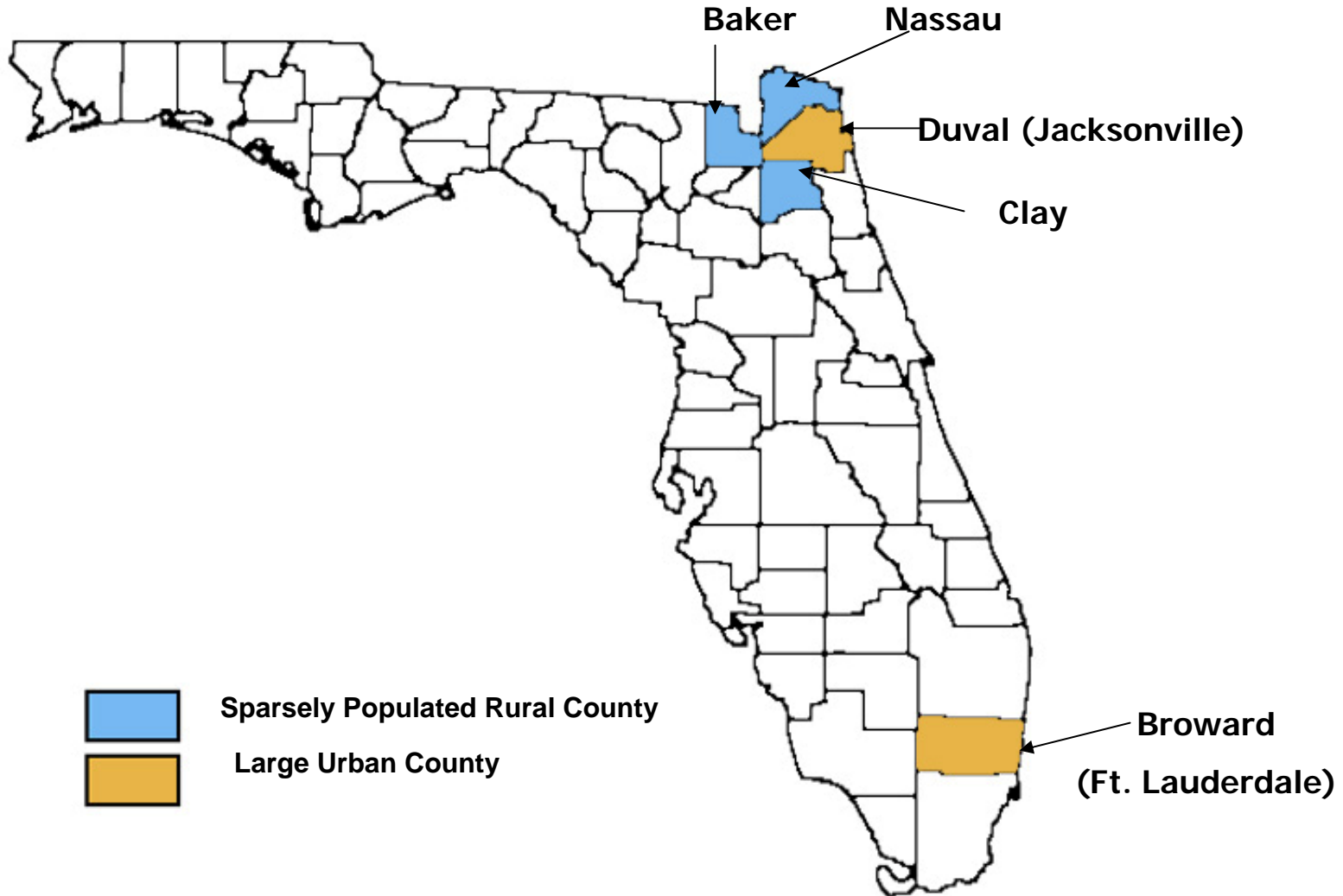
Elements of Medicaid Reform in Florida

- More choices for beneficiaries
 - HMOs
 - PSNs
 - Customized benefit packages
 - Opt-out to employer-sponsored plans
- Choice Counseling
- Enhanced Benefit Accounts
- Risk-adjusted rates
- Low-income Pool


Medicaid Reform


- Becomes effective in Broward (Ft. Lauderdale) and Duval (Jacksonville) Counties on July 1, 2006
- Will extend to Nassau, Clay, and Baker Counties after 1 year
- State wide expansion
 - phased-in
 - dependent on legislative approval

MEDICAID REFORM COUNTIES



Reform and the Reform Process

- Innovative/untested elements
 - Opt-out
 - Enhanced benefits
 - Aspects of choice counseling

Consumer Behavior
- Rapid ramp-up and implementation
 - Getting staff motivated
 - Management changes
 - Technical issues
 - Program design, software, plan selection process, rates, etc

Organizational and Administrative Challenges
- Political issues - state elections in November

Medicaid Reform Evaluation

- UF contracted by AHCA to conduct five-year evaluation study
- The evaluation study will examine whether or not reform achieves its stated objectives:
 - better health outcomes
 - enrollee satisfaction
 - predictability in cost

Key Questions

- Will there be competition among plans for Medicaid business?
- What will influence health behavior/utilization among low-income populations?
- Will access to care be enhanced/preserved?
- How will the role of the state agency change?
- What will the impact be on:
 - the larger insurance market?
 - providers?
 - employers?

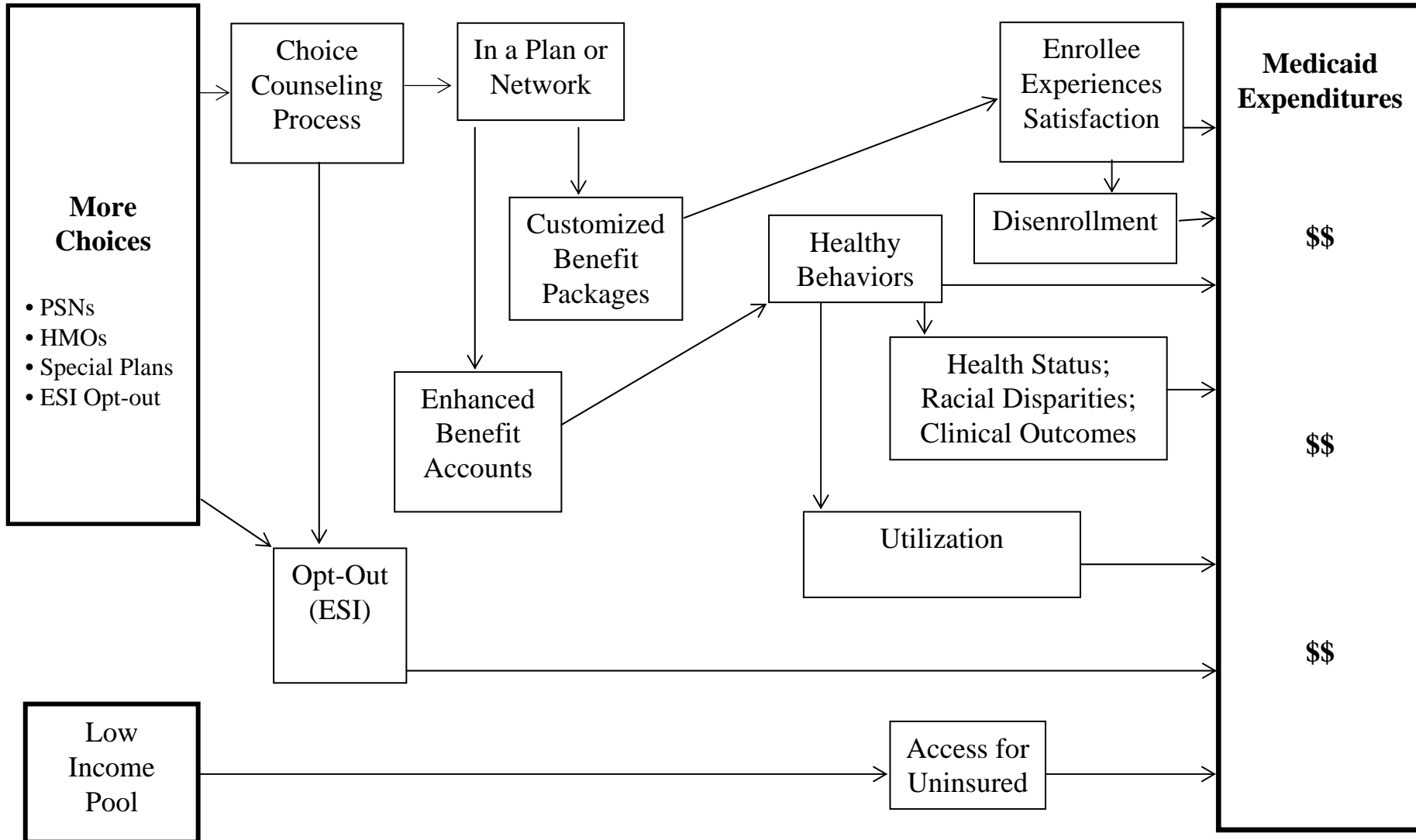
Research Challenges

- Complexity
- Causality
- Reform is a dynamic process
- Idea vs. design vs. implementation
- Data availability
- Interpretation of findings
- Impact may only be realized in the 'long-term'

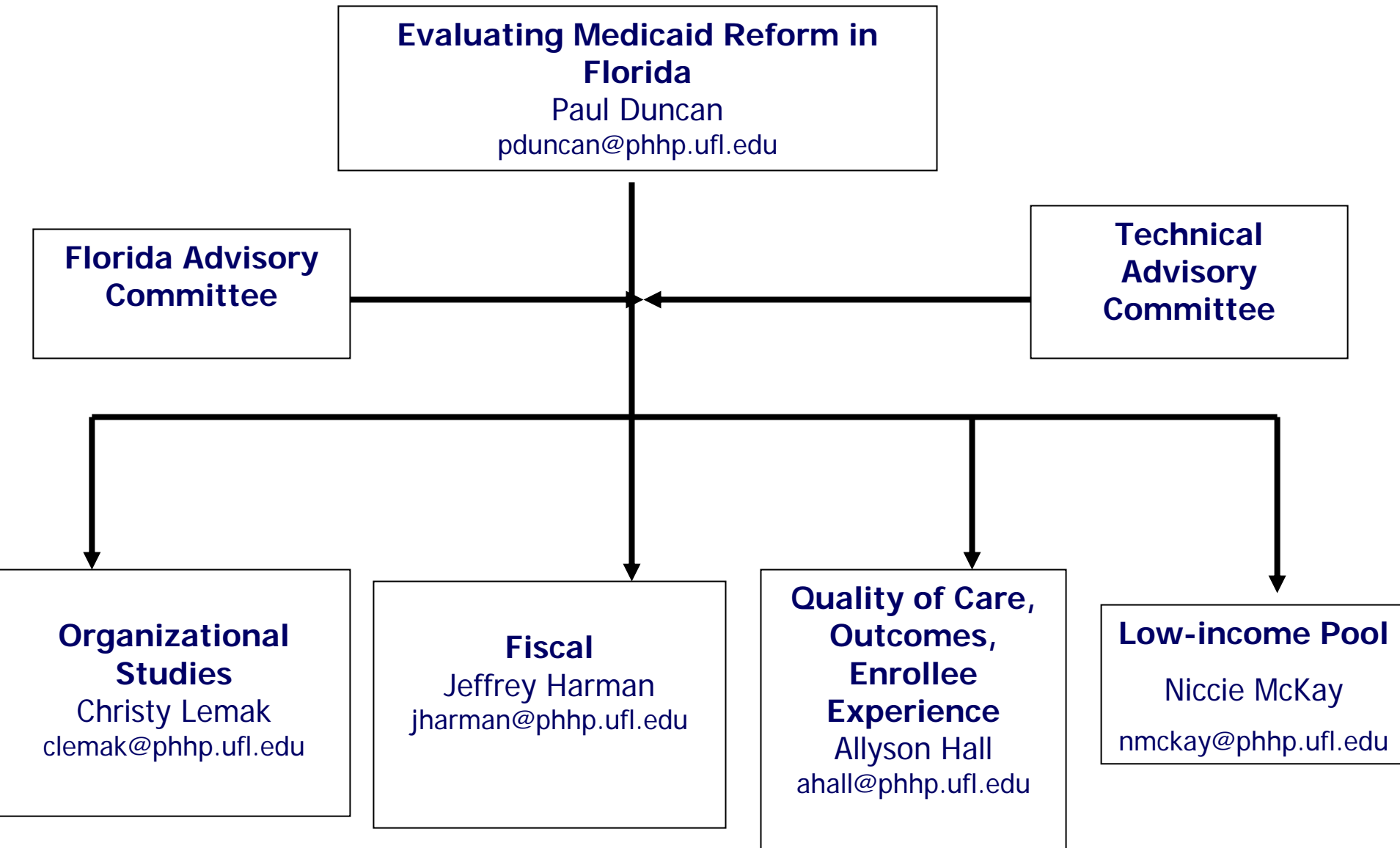
Evaluating Medicaid Reform in Florida – Key Reform Elements & Results

Reform Program Elements

Reform Program Results



The Evaluation Team



Questions?